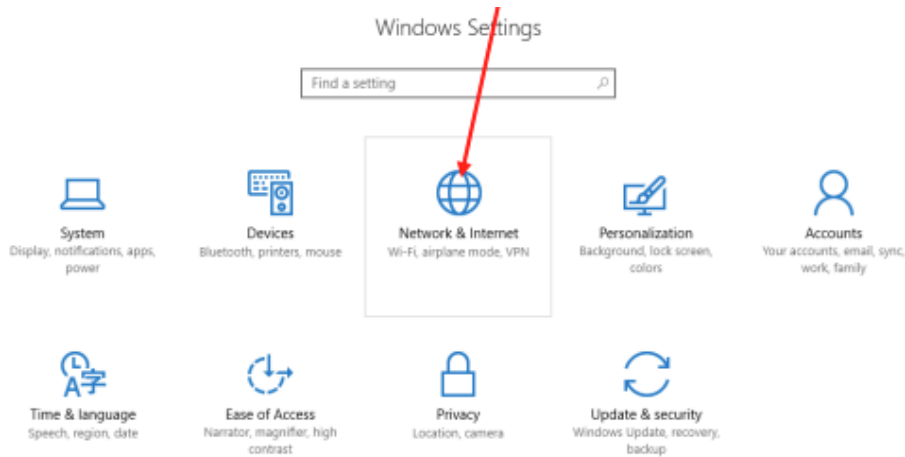


Connecting to Wifi (UNOSECURE) Using Windows 10 Operating System

The following instructions and general notes are for Windows 11 users. After the setup is completed, you will need to login to the UNO-Domain only for the initial connection. Please be careful since you are responsible for following all UNO policies regarding the use of the UNO network with your account. ***If you encounter any trouble, feel free to contact the Help Desk at (504) 280-4357 or by email at helpdesk@uno.edu. You may also stop by the Help Desk, located in the UCC Room 101.***

1. Go to **Settings** and Search or Select **Network & Internet**.



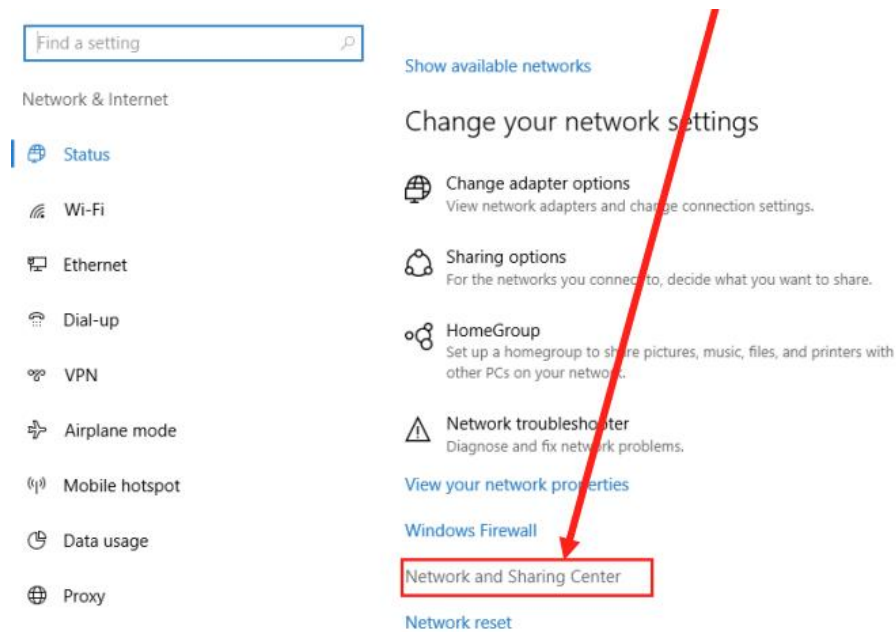
2. Select the **Wi-Fi** Section on the Left-Hand Navigation Bar.



3. Select “**Show available Networks**” → Select “**unosecure.**”
4. Enter your UNO username and password.

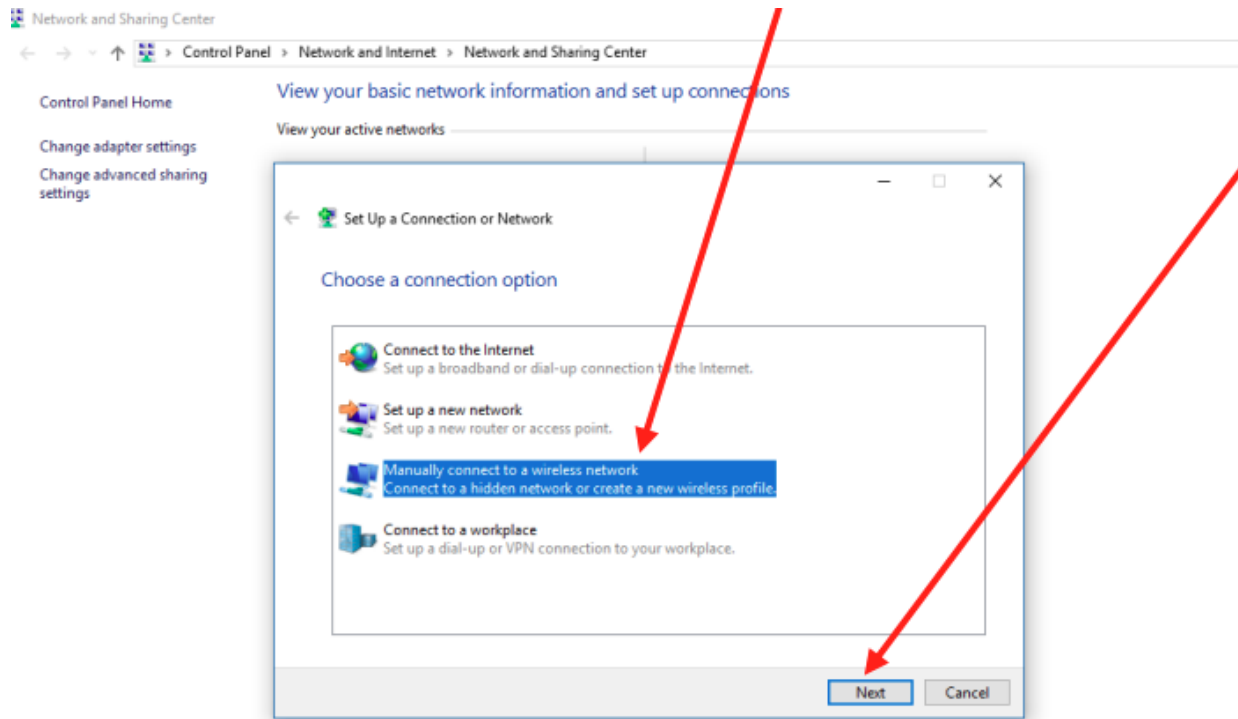
If these steps do not work try: Select “**Status**” on the Left-Hand Nav Bar.

5. Select **Network and Sharing Center**:



6. Select “**Set up a new connection or network.**”

7. Select the “**Manually connect to a wireless network**” and Select “**Next**”.



8. Enter the following information, to add the **unosecure** network to your PC. Click **Next** after entering the information listed below:

- a. Network Name: **unosecure**
- b. Network Type: **WPA2- Enterprise**
- c. The **Start the connection automatically** box must be **checked**.
- d. The **Connect even if the network is not broadcasting** box stays **unchecked**.