



WELCOME HOME PRIVATEERS!

# PONTCHARTRAIN HALL WELCOME LETTER

Summer 2021 Move-In Dates:

**THURSDAY, JUNE 3RD-TUESDAY,  
JUNE 8TH**

Select your check-in time via the Residential  
Life app at [www.myapps.uno.edu](http://www.myapps.uno.edu)  
State I.D. or Passport Required to Check-in



THE UNIVERSITY of  
NEW ORLEANS

# FAQ:

## Can I move in later than the week of June 2?

Summer school semester begins June 9th. We strongly encourage students to adhere to the scheduled move in dates, so any unexpected issues with room suite or otherwise, can be resolved before the first day of school. If you are unable to move in on the dates listed above, please email [ResidentialLife@uno.edu](mailto:ResidentialLife@uno.edu) to notify our office of your alternative move-in date.

## What can I bring into my room/residence halls?

### \*\* PLEASE NOTE \*\*

Room Specifications: 2-4 person occupancy rooms have extra long twin beds. Single occupancy rooms have a full bed. Each room has a bed, desk, chair & closet for each student. Bathrooms are 2 person shared use, except in single occupancy rooms. Rooms do not include TV's, mini fridges or microwaves. Each hall has two microwaves that are accessible to all student residents.

### BED and BATH ACCEPTABLE ITEMS

Pillows • Mattress Covers • Foam Pillow Mattress Toppers • Shower Mats • Bath Mats • Towels  
Wash Cloths • Shower Curtain & Liner • Shower Caddy • Area Rugs • Plunger  
Air Freshener Plug In • Bathroom Trash Container • Bathroom Cleaning Supplies

### LAUNDRY, KITCHEN and STORAGE ACCEPTABLE ITEMS

Clothes Hamper • Clothes Hangers • Shoe Bins • Organizers • Closet Organizers  
Storage Bins & Baskets [Plastic, Metal or Wire] • Plates • Bowls • Cups • Silverware  
Laundry Detergent • Dish Detergent • Dish Sponge • Trash Container

### WALL ORGANIZATION, PICTURES and DECOR

3M Command Strips • 3M Command Hooks [Nails, Tape and Tacks are Not Permitted]

### ELECTRONICS and APPLIANCES

Laptop • Desktop • Tablet • Smart Phone • Chargers • Electronic Devices & Accessories  
Ethernet Cords • Power Strips • TV's [Must be on Stand, Wall Mounts are Not Permitted]  
Small Microwave • Mini Fridge [3.5 Cubic Feet or Smaller] • Keurig Type Coffee Maker

## What can't I bring into my room/residence halls?

### \*\* PLEASE NOTE \*\*

All smoking, vaping, illegal narcotics and weapons are prohibited on UNO Campus.  
Items marked with an (\*) asterisk are prohibited by the Fire Marshall.

### ITEMS PROHIBITED AT UNO INCLUDE

Coffee Makers [Except Keurig's] • Hot Plates • Anything with a Heating Element/Hot Surface  
Air Fryer • Regular Size Refrigerators • Space Heaters • Christmas Lights\* • String Lights\*  
All Furniture • Curtains\* • Mattresses [Unless Approved by the Office of Disability]  
Regular Extension Cords [Except Power Strips] • Candles • Incense Burner • Incense  
Wax Warmers • Vaping Device • Vaping Supplies • All Smoking Paraphernalia  
Illegal Drugs & Drug Paraphernalia • Alcohol [If Under 21] • All Weapons • Pets

# FAQ:

## What if my roommate and I do not work out?

Your RA is there to assist you with this portion. At the floor meeting, you will be given a 'Roommate Bill of Rights'. This is your time to be open and honest with your roommate about how the suite should be maintained, so everyone is comfortable. Remember to compromise and be honest. This way, everyone knows their expectations up front.

## What if it still doesn't work out?

You will contact your RA and there will be a mediation that takes place. After that, you will see your respective Area Coordinator.

## Where do I pick up mail and packages?

There is a post office located on campus. You must set up a mailbox with them. They are located in the University Center. There is also a post office box rental fee associated with mailbox set up. Please do not send mail to the halls, as it will be sent back.

**3 Months \$20 • 6 Months \$30 • 9 Months \$40 • 12 months \$50**

## Move-In Checklist:

- ☐ Chat with your roommates about your expectations for your suite. The Office of Residential Life encourages roommates to work together to outline things that will impact their comfort in the suite: guests, cleaning, temperature, etc.
- ☐ Review your fee bill: ensure fees are paid or your payment plan is established and in good standing with the Bursar's Office.
- ☐ Register your Vehicle and Bicycle: gather your registration, license, etc. as your vehicle will have to be registered with the Office of Residential Life and receive a new decal each semester. If you brought a bicycle to campus, register your bicycle with the Office of Residential Life.
- ☐ Program Your ID for the Front Doors with Campus Card Office in UCC.
- ☐ Meet your Resident Assistant!
- ☐ Follow your Residential Life team on social media!



@\_unophalls\_



facebook.com/UNOResLife



@UNOResLife

# Campus Dining Hours



	MON	TUES	WED	THURS	FRI	SAT	SUN
Breakfast	8-9a	8-9a	8-9a	8-9a	8-9a	Closed	Closed
Lunch	11a-1p	11a-1p	11a-1p	11a-1p	11a-1p	Closed	Closed
Dinner	4:30-6p	4:30-6p	4:30-6p	4:30-6p	4:30-6p	Closed	Closed



MON	TUES	WED	THURS	FRI	SAT	SUN
3-7pm	3-7pm	3-7pm	3-7pm	3-7pm	3-7pm	3-7pm



MON	TUES	WED	THURS	FRI	SAT	SUN
9-1pm	9-1pm	9-1pm	9-1pm	9-1pm	Closed	Closed



MON	TUES	WED	THURS	FRI	SAT	SUN
11-1pm	11-1pm	11-1pm	11-1pm	11-1pm	Closed	Closed

# NEED-TO-KNOW:

## WIFI

Look for the "resnetsecure" network in your wifi settings. ResNet provides each resident an individual connection to the University network and internet. You can use multiple devices on the resnetsecure network, by using our instructions to configure your device's network settings and entering your UNO student credentials. For more information about getting your computer and mobile devices to connect to ResNet, please visit our website at <http://new.uno.edu/it/resnet>.



## Online Gaming & Streaming Devices (MAC Authentication)

To use video gaming devices for online gaming and/or streaming devices (i.e. Roku, Amazon FireStick, etc.) for viewing online content, you will need to contact the UNO IT Help Desk to request to have your devices configured to use ResNet. To contact the IT Help Desk, call **(504) 280-HELP**. Hours of operation are Monday to Friday 8:00am – 4:30pm.

Provide the IT Consultant with the following information:

Name of your gaming/streaming device (i.e. Xbox, PS4, Amazon FireStick, etc...) • Whether the request for using a wifi or wired (i.e. Ethernet) connection • The MAC address of your gaming and/or streaming device • Your Room Location (ie. PHN 128A) • Contact Number (i.e. cell phone number)

A ticket will be created for your request. Once the request is completed, you will also be provided instructions on how to setup your gaming/streaming device for accessing the ResNet network.





## Laundry

The cost of laundry is included in your housing fees. Our laundry rooms are equipped with washers and dryers for your convenience. Check out the LaundryView app to make washing your clothes a breeze

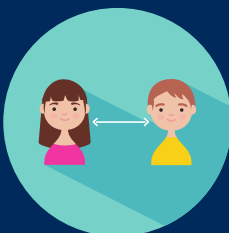
## Maintenance Requests:

Should a maintenance issue arise in your room, please report the issue within the Residential Life app at [myapps.uno.edu](https://myapps.uno.edu). Select "RCR/Damages" in the left hand menu and select "Maintenance Requests." From here you can enter requests for your suite. For an afterhours maintenance emergency, please contact the front desk of your hall.



## Covid-19 Physical Distancing Policies:

All persons must wear a mask or facial covering while outside of their suite within Pontchartrain Halls. Please maintain 6 feet distance from others. Occupancy limits on common spaces and areas are posted on the area doors. Residents are required to abide by these occupancy limits. Use of the Billiard room in Pontchartrain Hall North is available by scheduled times. (See the North Hall front desk to schedule). Students are encouraged to frequently wash hands and get regularly tested for Covid-19. If you are experiencing Covid-19 symptoms or have received a positive Covid-19 test, reach out to the Residential Life staff to begin quarantine/ isolation protocols to prevent the spread of Covid-19 in our communities.





THE UNIVERSITY of  
NEW ORLEANS

# THANK YOU FOR CHOOSING PONTCHARTRAIN HALLS

**WE LOOK FORWARD TO SPENDING THE  
SEMESTER WITH YOU!**

See the Pontchartrain Hall Handbook for  
additional questions:

<https://www.uno.edu/media/17526>

Or contact Residence Life

[ResidentialLife@uno.edu](mailto:ResidentialLife@uno.edu)

