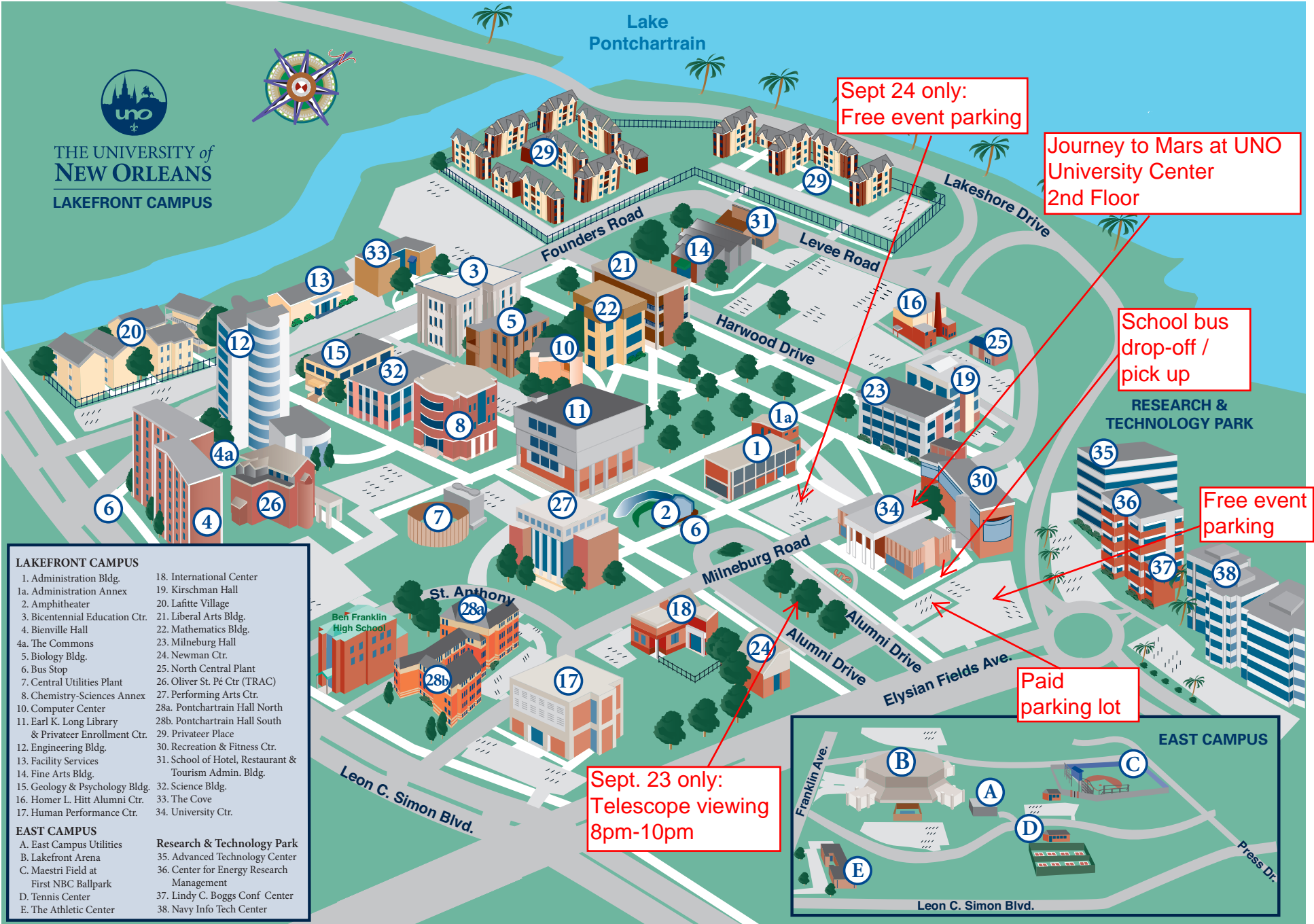




THE UNIVERSITY of  
NEW ORLEANS  
LAKEFRONT CAMPUS



Lake  
Pontchartrain



Sept 24 only:  
Free event parking

Journey to Mars at UNO  
University Center  
2nd Floor

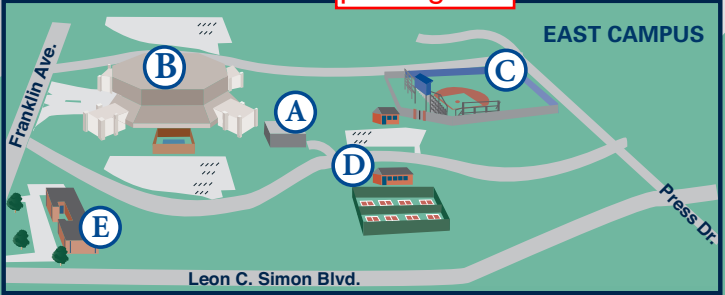
School bus  
drop-off /  
pick up

RESEARCH &  
TECHNOLOGY PARK

Free event  
parking

Paid  
parking lot

Sept. 23 only:  
Telescope viewing  
8pm-10pm



**LAKEFRONT CAMPUS**

- |                                |  |
|--------------------------------|--|
| 1. Administration Bldg.        | 18. International Center                               |
| 1a. Administration Annex       | 19. Kirschman Hall                                     |
| 2. Amphitheater                | 20. Lafitte Village                                    |
| 3. Bicentennial Education Ctr. | 21. Liberal Arts Bldg.                                 |
| 4. Bienville Hall              | 22. Mathematics Bldg.                                  |
| 4a. The Commons                | 23. Milneburg Hall                                     |
| 5. Biology Bldg.               | 24. Newman Ctr.  |
| 6. Bus Stop                    | 25. North Central Plant                                |
| 7. Central Utilities Plant     | 26. Oliver St. Pè Ctr (TRAC)                           |
| 8. Chemistry-Sciences Annex    | 27. Performing Arts Ctr.                               |
| 10. Computer Center            | 28a. Pontchartrain Hall North                          |
| 11. Earl K. Long Library       | 28b. Pontchartrain Hall South                          |
| & Privateer Enrollment Ctr.    | 29. Privateer Place                                    |
| 12. Engineering Bldg.          | 30. Recreation & Fitness Ctr.                          |
| 13. Facility Services          | 31. School of Hotel, Restaurant & Tourism Admin. Bldg. |
| 14. Fine Arts Bldg.            | 32. Science Bldg.                                      |
| 15. Geology & Psychology Bldg. | 33. The Cove   |
| 16. Homer L. Hitt Alumni Ctr.  | 34. University Ctr.                                    |
| 17. Human Performance Ctr.     |  |

**EAST CAMPUS**

- |  |   |
|--|---|
| A. East Campus Utilities               | Research & Technology Park                |
| B. Lakefront Arena                     | 35. Advanced Technology Center            |
| C. Maestri Field at First NBC Ballpark | 36. Center for Energy Research Management |
| D. Tennis Center                       | 37. Lindy C. Boggs Conf. Center           |
| E. The Athletic Center                 | 38. Navy Info Tech Center                 |