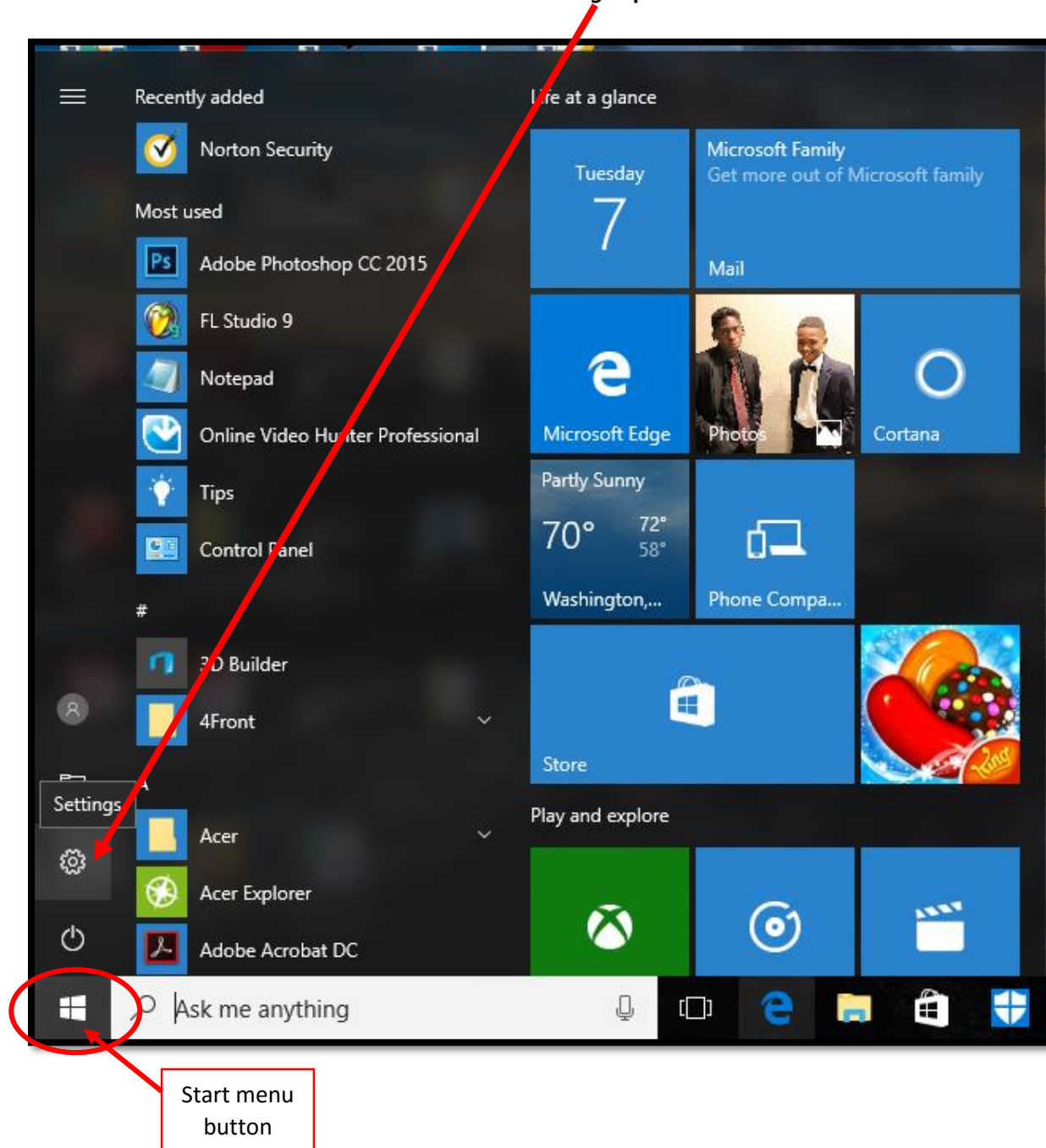




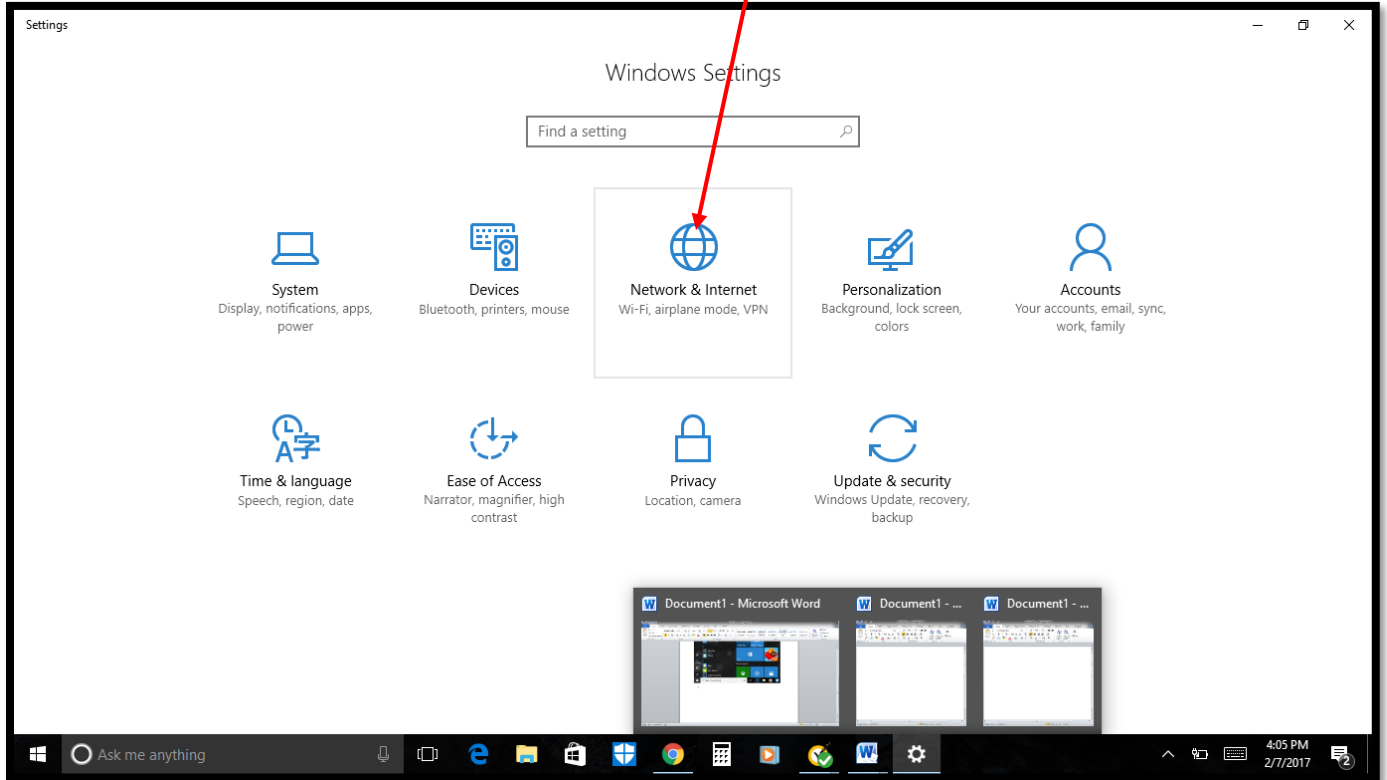
# Connecting to Wifi (UNOSECURE) Using Windows 10 Operating System

1. Click on the *Windows Start* button. Select the **Settings** options.



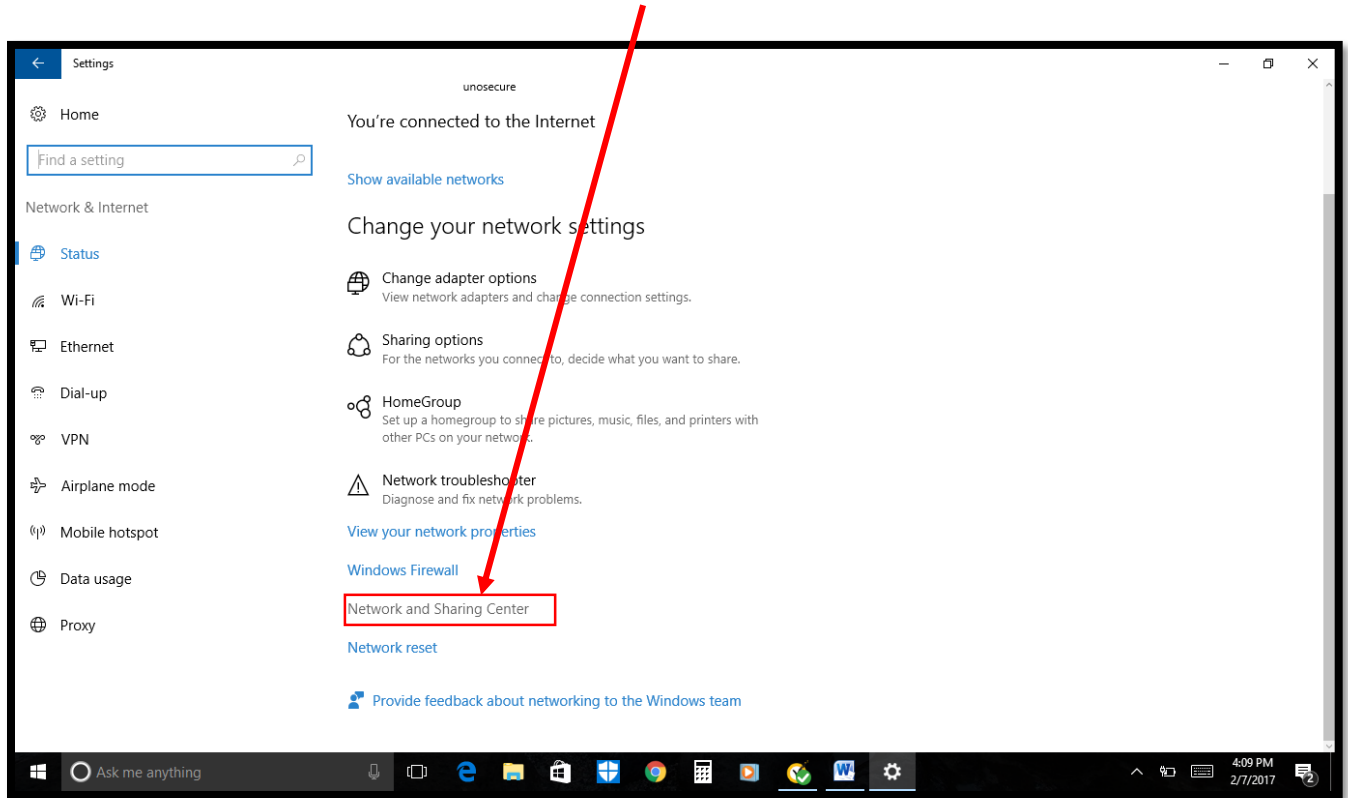
*“Proudly Providing IT Support for the UNO Community”*

2. On the *Windows Settings* page, Click on the **Network & Internet Option**

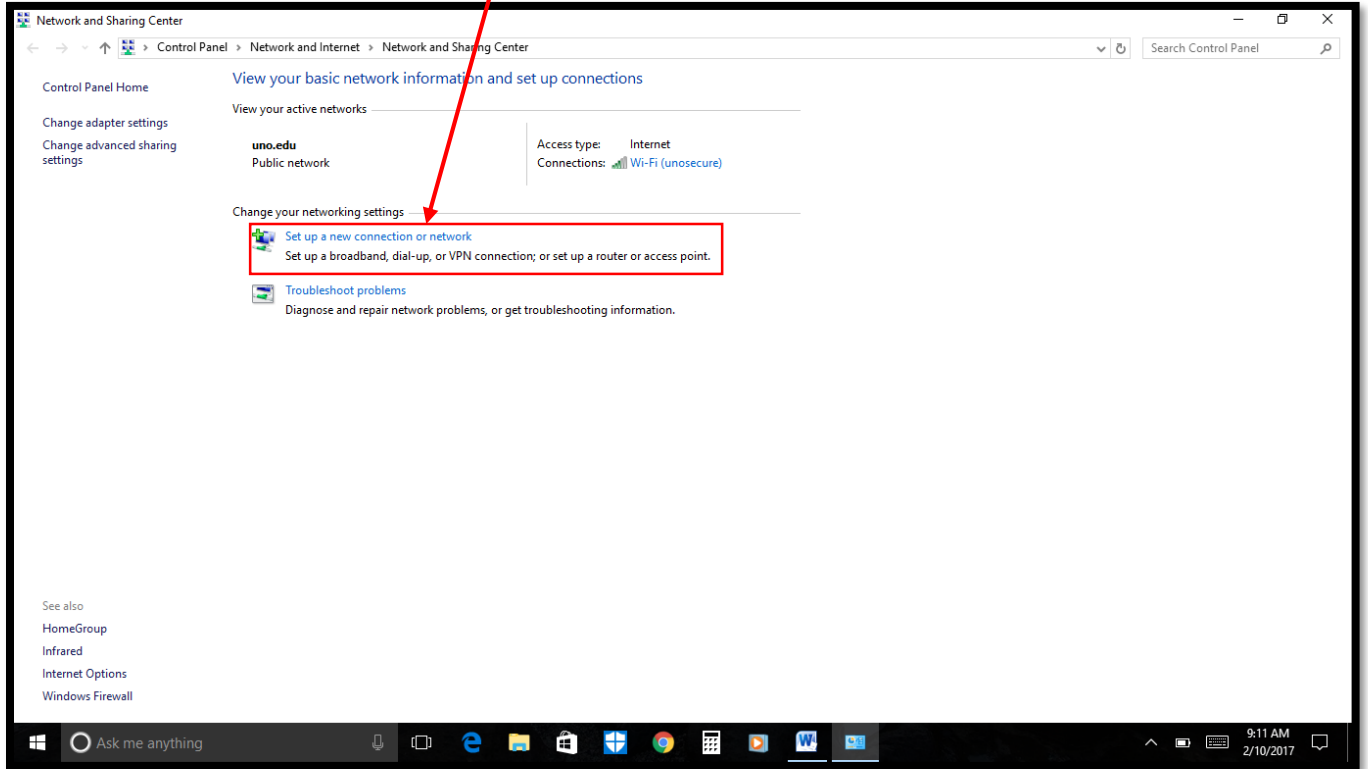


*“Proudly Providing IT Support for the UNO Community”*

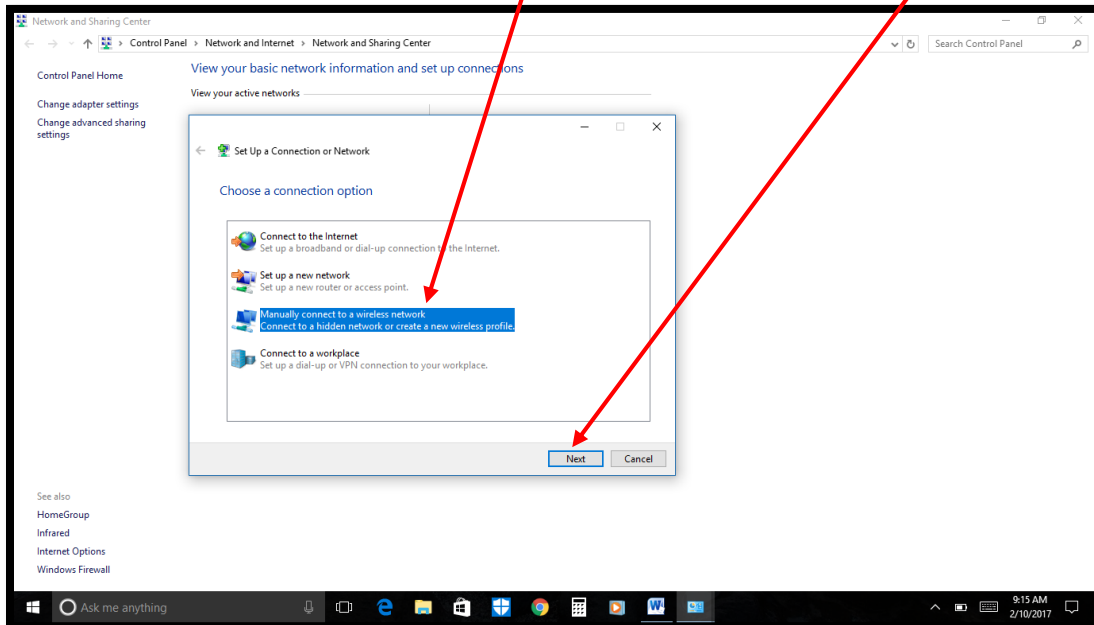
3. Scroll down and select the **Network & Sharing Center** Option.



4. Click on **Set up a new connection or network**.

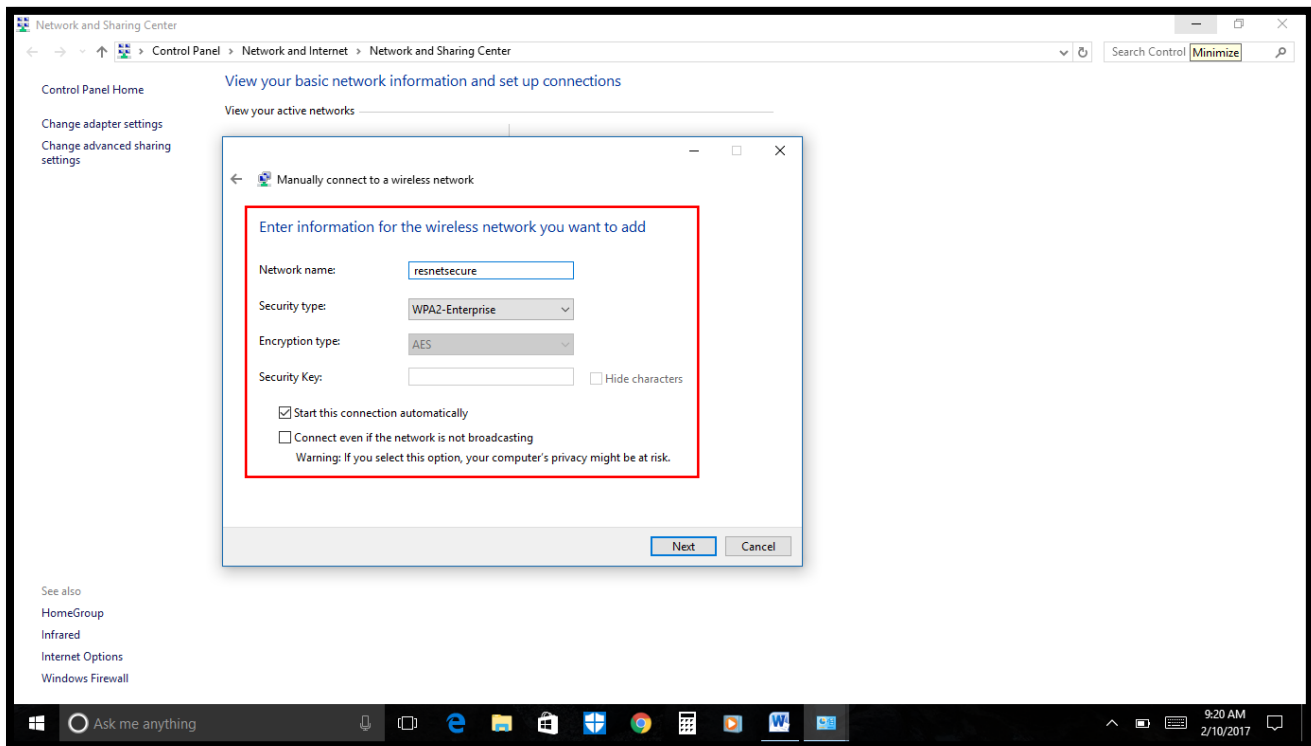


5. Select the **Manually Connect to a Wireless Network** option and click the **Next** button.



*“Proudly Providing IT Support for the UNO Community”*

6. Enter the following information, to add the **UNOsecure** network to your PC. Click **Next** after entering the information listed below:
  - a. Network Name: **unosecure**
  - b. Network Type: **WPA2- Enterprise**
  - c. The **Start the connection automatically** box must be **checked**.
  - d. The **Connect even if the network is not broadcasting** box stays **unchecked**.



7. The UNOsecure network is added to your PC. Enjoy!