

## Connecting to UNOSECURE using Windows 7

1. Click the Wireless status icon on the task bar.



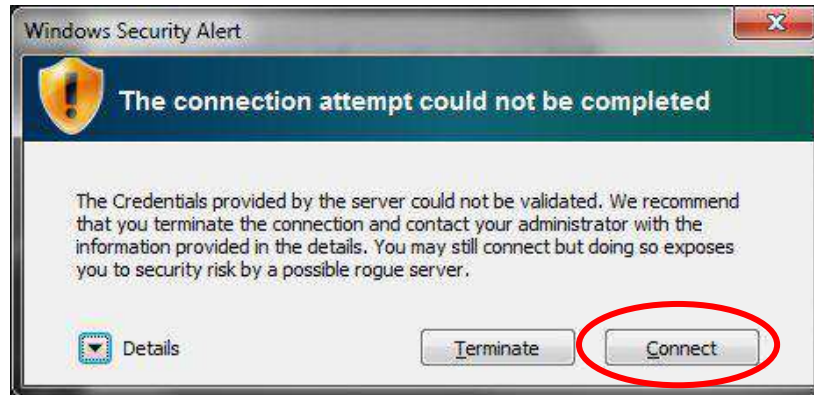
2. Select the **unosecure** connection and click **connect**.



3. Enter your UNO username and password. Click **OK**.

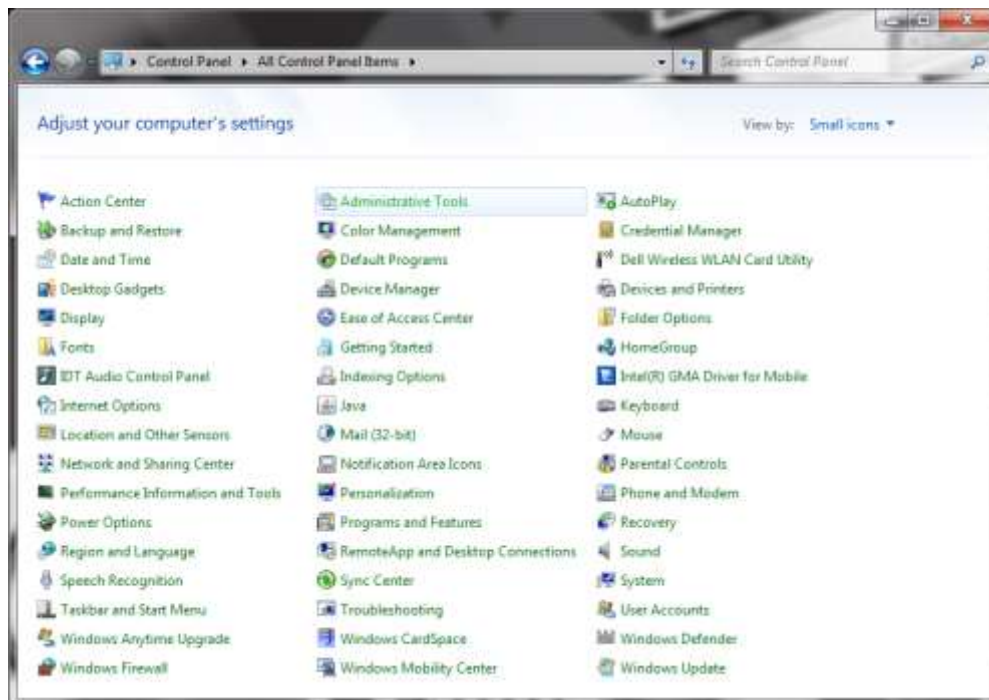


4. A new window will pop up. Click **Connect**.

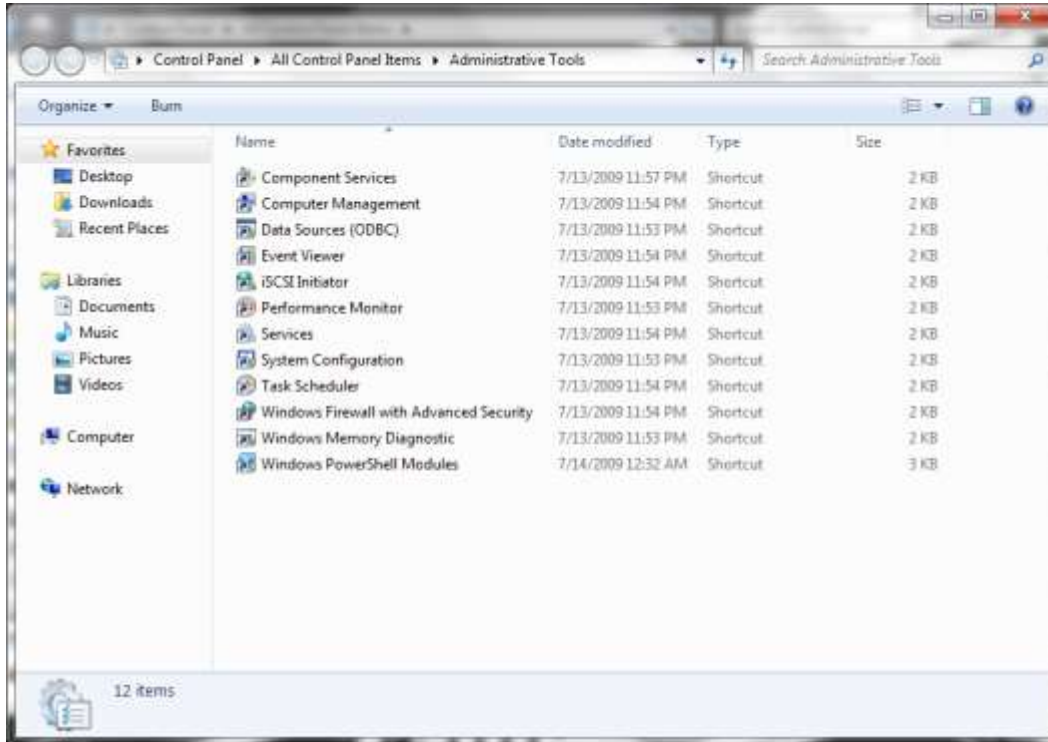


If you still cannot connect after following these steps, do the following:

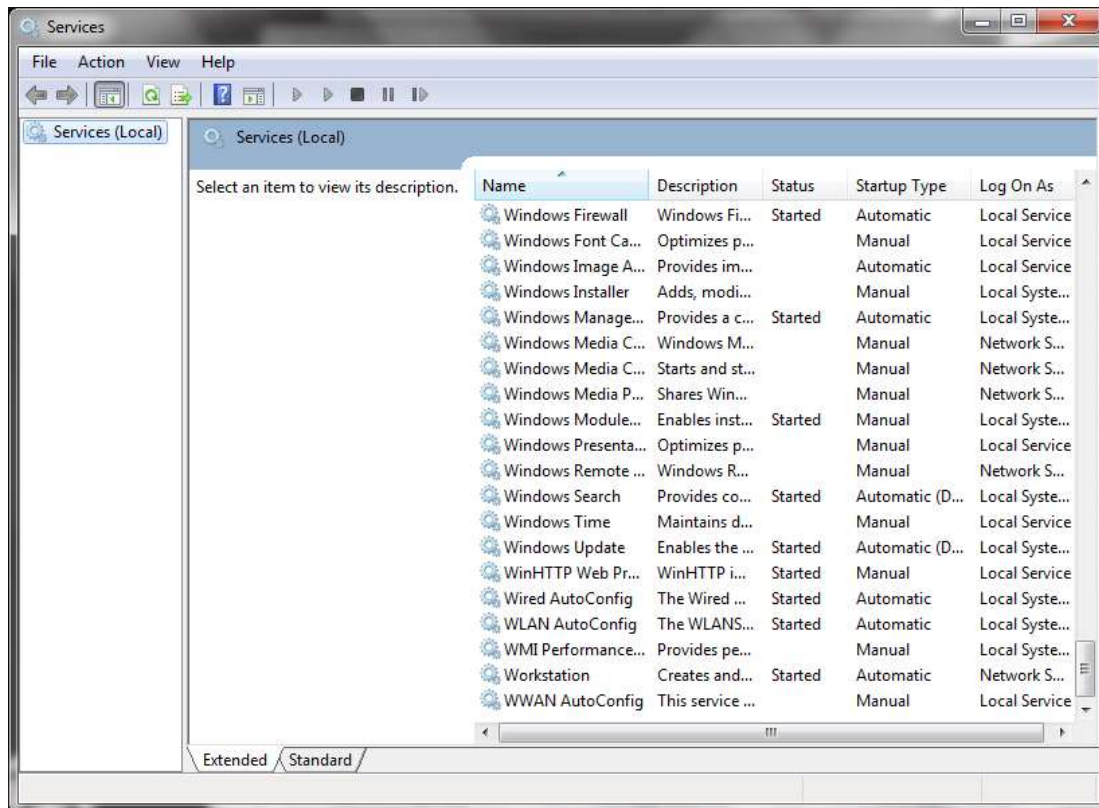
1. Go to the **Start** menu and click **Control Panel**. In the top right corner of the new window, select view by **Small Icons** from the drop-down menu. Then, double-click on **Administrative tools**.



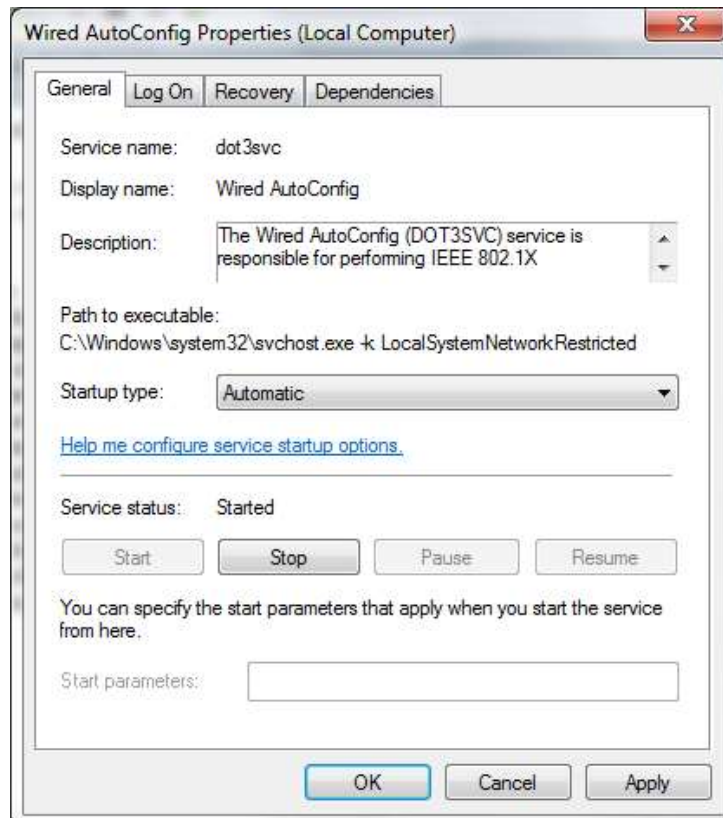
2. In the new window, double-click **Services**.



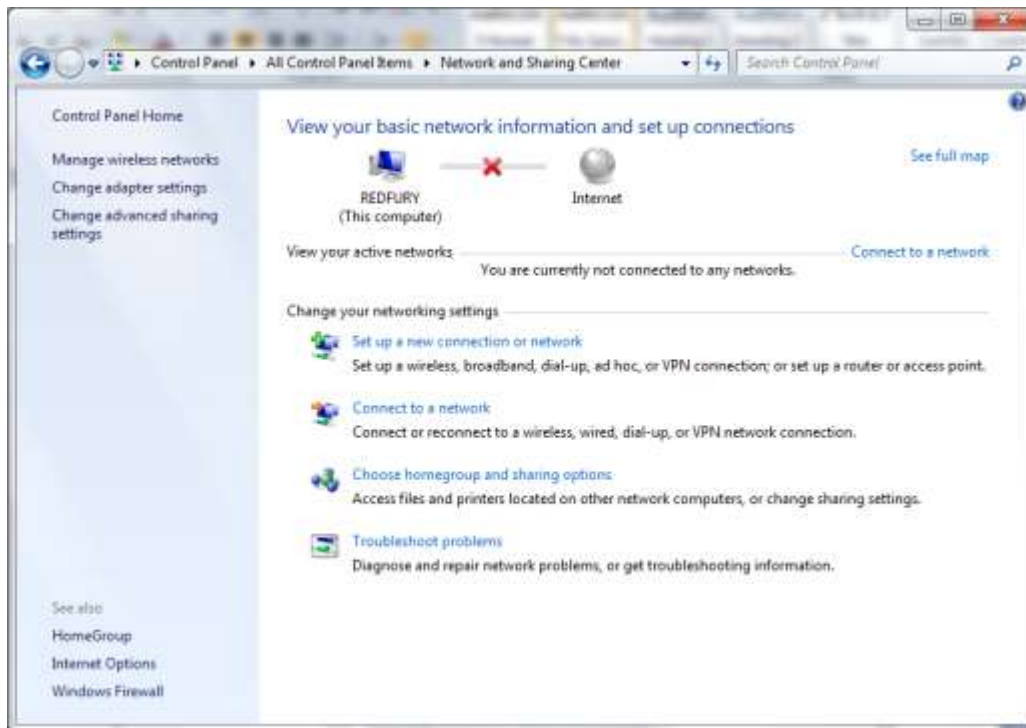
- Then, scroll all the way down and double-click **Wired AutoConfig**.



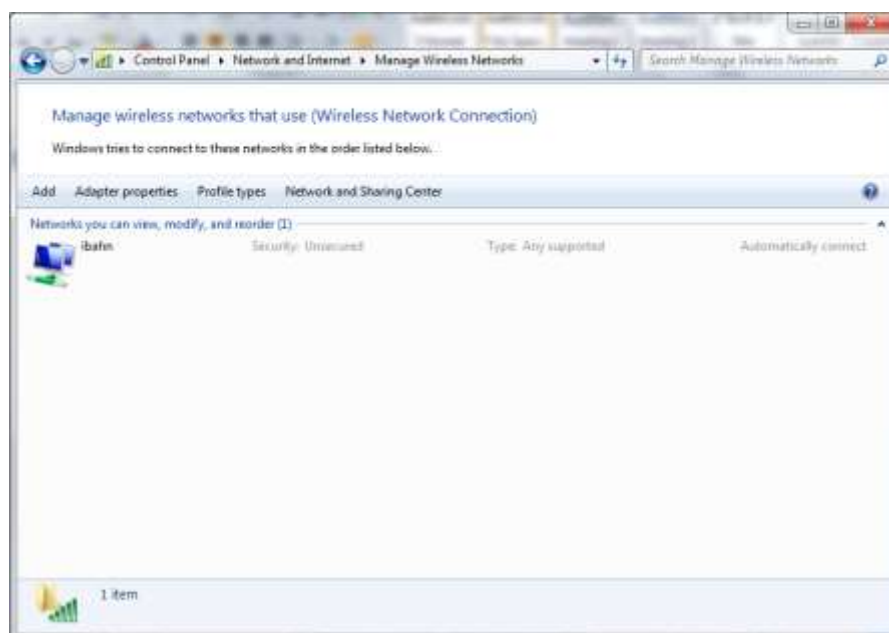
4. In the new properties window, set the Startup type to **Automatic**. Then, click **start** under Service status. When the screen has updated, click **OK**. You can now close the Services window and click the back button to get back to the Control Panel.



5. Change to view by Categories and double-click Network and Sharing Center
6. Then, click **Manage Wireless Networks** on the left.

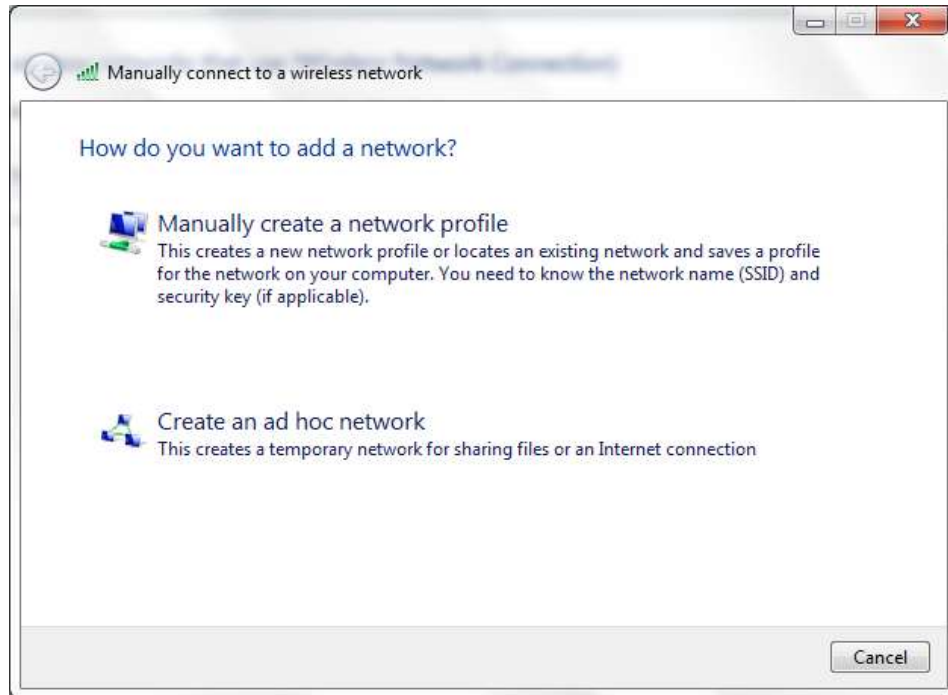


7. Click **Add**.

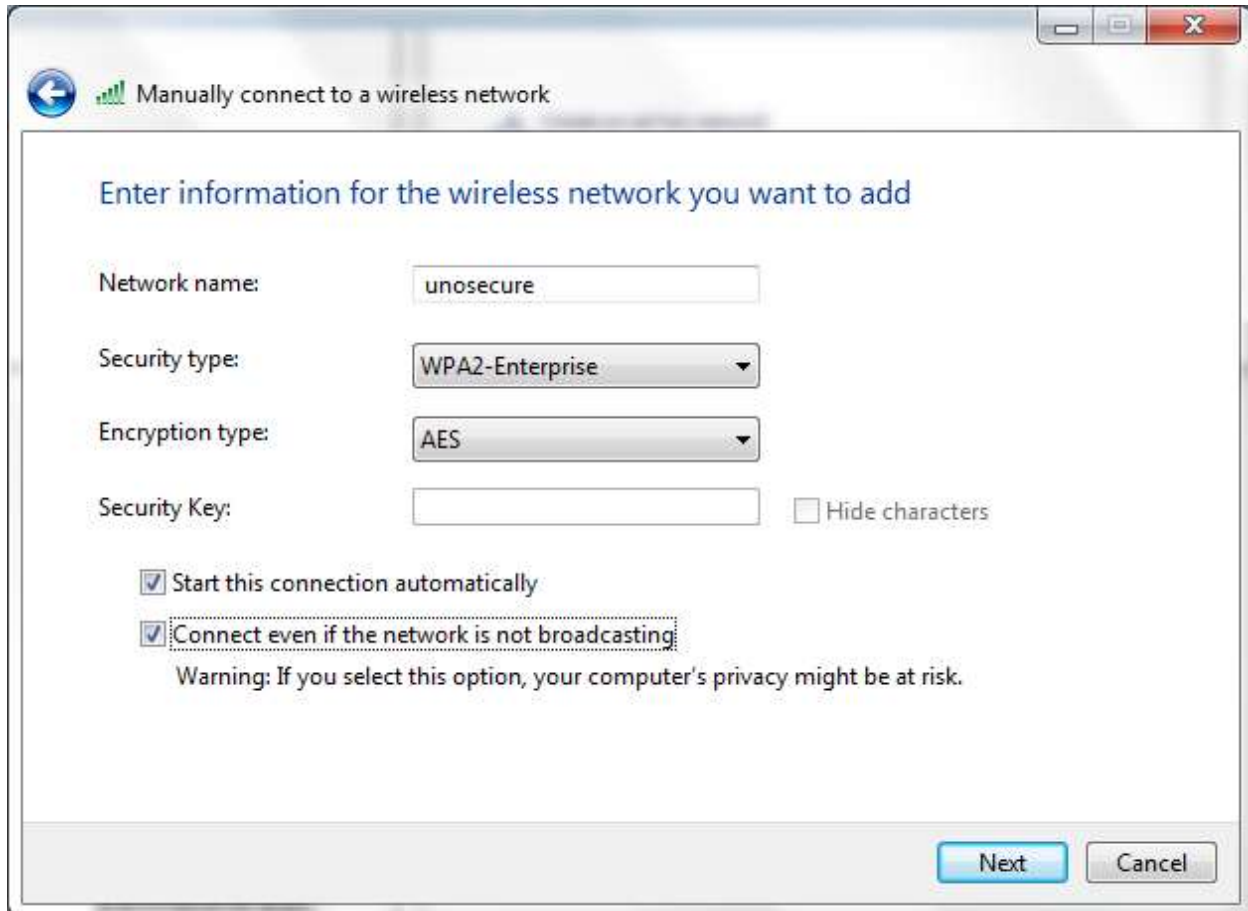




8. In the new window, click **Manually create a network profile**.



- The Network name is **unosecure**. Set the security type to **WPA-2 Enterprise** and the encryption type to **AES**. Also, check **start this connection automatically** and **Connect even if the network is not broadcasting**. Then, click **Next**.



Manually connect to a wireless network

Enter information for the wireless network you want to add

Network name:

Security type:

Encryption type:

Security Key:   Hide characters

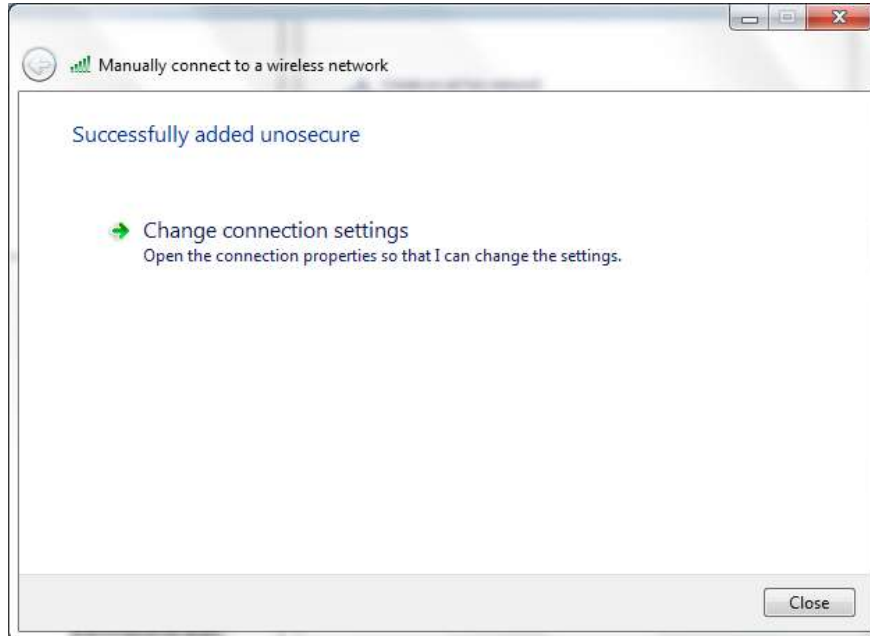
Start this connection automatically

Connect even if the network is not broadcasting

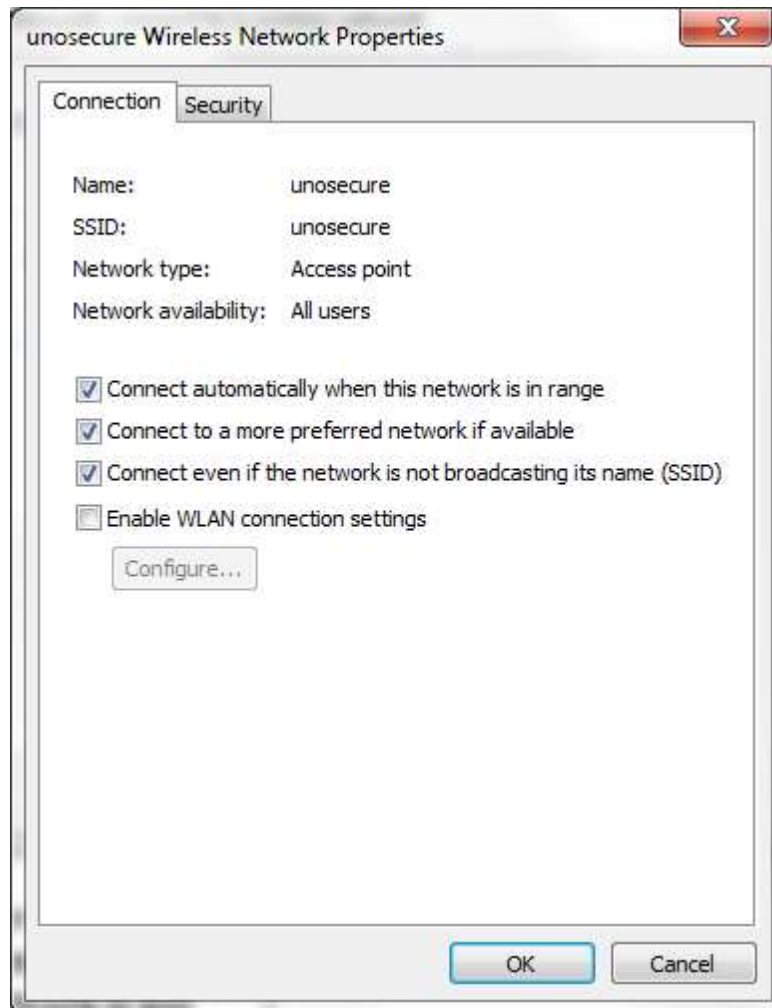
Warning: If you select this option, your computer's privacy might be at risk.



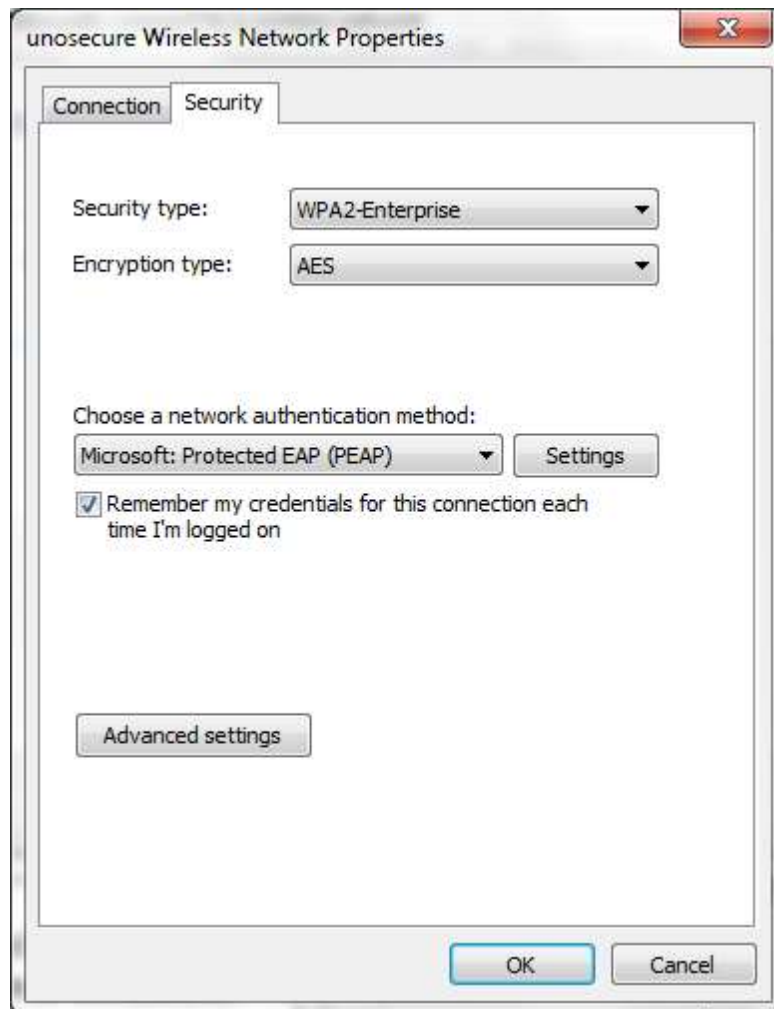
10. Click **Change connection settings**.



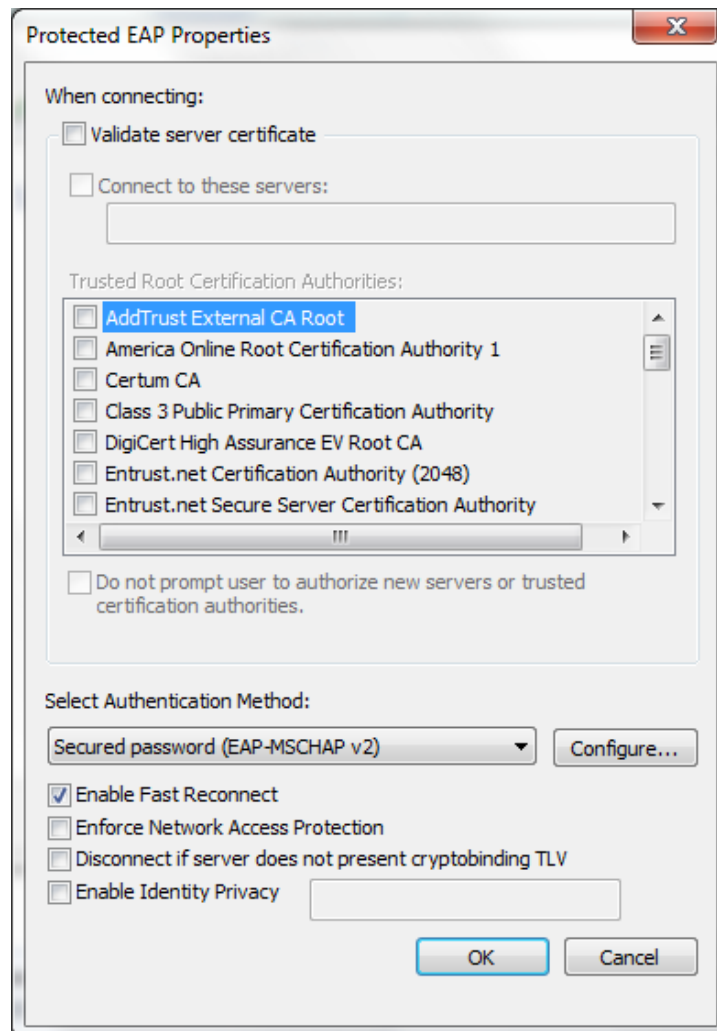
11. In the new window, check **Connect automatically when this network is in range**, **Connect to a more preferred network if available**, and **Connect even if the network is not broadcasting its name (SSID)**.



12. Click the **Security tab** at the top of the window. Set the Security type to **WPA-2 Enterprise** and the Encryption type to **AES**. From the Choose a network authentication method drop-down menu, select **Protected EAP (PEAP)**. Check **Remember my credentials for this connection each time I'm logged on**. Click **Settings**.



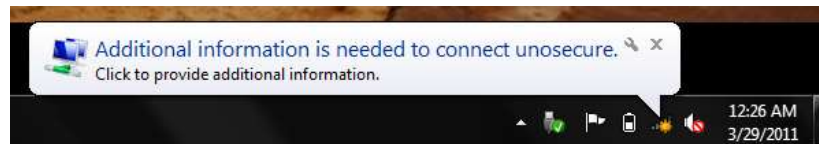
13. In the new window, uncheck **Validate server certificate**. In the Select Authentication Method drop-down menu select **Secured password (EAP-MSCHAP v2)**. Click **Configure**.



14. Uncheck **Automatically use my Windows logon name and password (and domain if any)**.



15. Click **OK** on all open windows to close them out.  
16. A balloon asking for additional information should appear. Click it.



17. Enter your UNO username and password. Then, click **OK**.



The computer should now connect to the UNO Secured Wireless Network with WPA2 Encryption.

If you encounter any trouble, feel free to contact the Help Desk at (504) 280-4357 or by email at [helpdesk@uno.edu](mailto:helpdesk@uno.edu). You may also stop by the Help Desk, located in the UCC Room 101.