

1.4.d3 Conceptual Framework MAT All

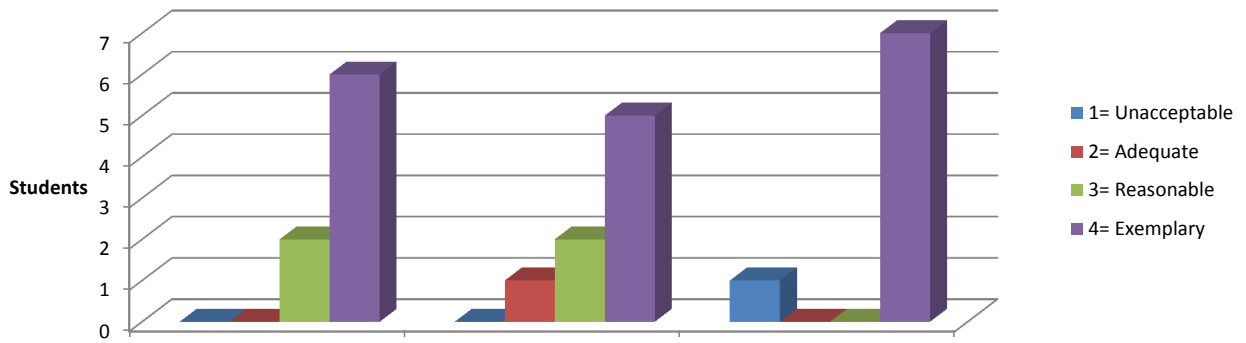
1= Unacceptable
 2= Adequate
 3= Reasonable
 4= Exemplary

Fall 2014

Rubric: Conceptual Framework

| N= 8 | | | | | |
|--------------------------------------|---|---|---|---|-------|
| MAT All | 1 | 2 | 3 | 4 | Mean |
| COEHD Roles | 0 | 0 | 2 | 6 | 3.75 |
| Theory-Practice-Research Interaction | 0 | 1 | 2 | 5 | 3.5 |
| Written Language | 1 | 0 | 0 | 7 | 3.625 |

Conceptual Framework



Conceptual Framework MAT by Program

| | | | | | |
|---|-----------|---|---|---|------|
| 1= Unacceptable 2= Adequate 3= Reasonable 4= Exemplary | Fall 2014 | | | | |
| Rubric: Conceptual Framework | | | | | |
| N= 2 | | | | | |
| MAT 6-12 BIOS | 1 | 2 | 3 | 4 | Mean |
| COEHD Roles | 0 | 0 | 0 | 1 | 4 |
| Theory-Practice-Research Interaction | 0 | 0 | 0 | 1 | 4 |
| Written Language | 0 | 0 | 0 | 1 | 4 |
| N= 2 | | | | | |
| MAT 6-12 EI | 1 | 2 | 3 | 4 | Mean |
| COEHD Roles | 0 | 0 | 1 | 1 | 3.5 |
| Theory-Practice-Research Interaction | 0 | 0 | 2 | 0 | 3 |
| Written Language | 0 | 0 | 0 | 2 | 4 |
| N= 1 | | | | | |
| MAT 6-12 ENGL | 1 | 2 | 3 | 4 | Mean |
| COEHD Roles | 0 | 0 | 0 | 1 | 4 |
| Theory-Practice-Research Interaction | 0 | 0 | 0 | 1 | 4 |
| Written Language | 0 | 0 | 0 | 1 | 4 |
| N= 2 | | | | | |
| MAT IM ELE | 1 | 2 | 3 | 4 | Mean |
| COEHD Roles | 0 | 0 | 1 | 1 | 3.5 |
| Theory-Practice-Research Interaction | 0 | 1 | 0 | 1 | 3 |
| Written Language | 1 | 0 | 0 | 1 | 2.5 |
| N= 1 | | | | | |
| MAT 6-12 IM ENGL | 1 | 2 | 3 | 4 | Mean |
| COEHD Roles | 0 | 0 | 0 | 1 | 4 |
| Theory-Practice-Research Interaction | 0 | 0 | 0 | 1 | 4 |
| Written Language | 0 | 0 | 0 | 1 | 4 |
| N= 1 | | | | | |
| MAT 6-12 SS | 1 | 2 | 3 | 4 | Mean |
| COEHD Roles | 0 | 0 | 0 | 1 | |
| Theory-Practice-Research Interaction | 0 | 0 | 0 | 1 | 4 |
| Written Language | 0 | 0 | 0 | 1 | 4 |
| ELE | N/A | | | | |
| 6-12 (BIOS, CHEM, EES, GEN SCI, PHYS, MATH) | | | | | |
| 6-12 IM (BIOS, CHEM, EES, GEN SCI, PHYS, MATH, SS) | | | | | |